



JAINEX STEEL & METAL

**WE
CUSTOMIZE
TO
EVERY NEED**



WE CUSTOMIZE TO EVERY NEED



JAINEX STEEL & METAL

COMPANY PROFILE



JAINEX STEEL AND METAL are the importers, stockiest & suppliers of Stainless Steel and Nickel Alloy sheets, Strips, Foil, Coil, Shims. Jainex Steel takes immense pleasure in introducing itself as one of the leading names in the Engineering Industry having Integrated Steel Complex with modern integration to produce Strips, Coil, Sheet, Foil. we have experience in this field for many years. We can manufacture ultra-thin (up to 0.03mm) high precision Stainless Steel Strips and Nickel alloy with dimensional accuracy, excellent flatness, and smooth surface finish.

Over a decade of progress have consistently made us realize that more than products, it is understanding the client's requirement and giving maximum services to the customer is what makes us stand apart from others. We have a self contained unit with forming, Forging, Welding, Machining ,Heat treatment, and Facilities for physical & Chemical testing, This enables us to meet strict requirements of manufacturing and testing codes.

Each of our department right from procurement, production, inventory, market, sales and services are fully automated for a better supply chain management, so as to offer the best product quality and prompt service to our clients. Along with technological equipment, manpower is also given special attention. All our professionals are highly dedicated and committed to their client's requirements. Our team of workers strives to provide quality service to you according to your specification.

We have served our prestigious clients by supplying from spare parts to whole Projects. With our Commitment towards quality & timely delivery on regular basis at the most reasonable prices, we have developed long term business relations with our customers. We have built up adequate stock levels of all essential items within our scope of supply and are in a position to offer immediate deliveries. The quality of our products is engineered by ourselves & has been hailed & vouched by numerous companies & MNC's across the world. Our Research & Development Team keeps on proposing necessary changes as we are in constant touch with various successful clients in the world.



WE CUSTOMIZE TO EVERY NEED



JAINEX STEEL & METAL

CHEMICAL COMPOSITION OF STAINLESS STEEL

Grade	Chemical Composition - Per Cent									Nearest Equivalent Specification			
	AISI	C Max	Mn Max	P Max	S Max	Si Max	Cr	Ni	Mo	Other Element	I.S	En	DIN
201		0.15	5.50-7.50	0.060	0.030	1.00	16.00/18.00	3.50-5.50	-	N<0.25	-	-	-
202		0.15	7.50-10.00	0.060	0.030	1.00	17.00/19.00	4.00-6.00	-	N<0.25	-	-	XBCrMnNi 189
301		0.15	2.0max	0.045	0.040	1.0	16.0/18.0	6.0/8.0	-	-	10Cr 17Ni7	-	X 12CrNi 177
304		0.08	2.0	0.045	0.030	1.0	18.0/20.0	8.0/10.0	-	-	04Cr18Ni10	En-58E	X12CrNiS 188
304L		0.030	2.0	0.045	0.030	1.0	18.0/20.0	8.0/10.0	-	-	02Cr18Ni11	-	X12CrNiS 188
309		0.20	2.0max	0.045	0.030	1.0	22.0/24.0	12.0/15.0	-	-	20Cr24Ni12	-	X12CrNi 189
309S		0.08	2.0	0.045	0.030	1.0	22.0/24.0	12.0/15.0	-	-	-	-	X15CrNiSi20 12
310		0.25	2.0	0.045	0.030	1.50	24.0/26.0	19.0/22.0	-	-	10Cr25Ni121	-	-
310S		0.08	2.0	0.045	0.030	1.50	24.0/26.0	19.0/22.0	-	-	-	-	x15CrNi2520
316		0.08	2.0	0.045	0.030	1.0	16.0/18.0	10.0/14.0	2.0/3.0	-	04Cr17Ni12Mo2	En-58H	X5CrNi2521
316L		0.030	2.0	0.045	0.030	1.0	16.0/18.0	10.0/14.0	2.0/3.0	-	03Cr17Ni12Mo2	-	Z5CrNiMo 18 10
316TI		0.080	2.0	0.045	0.030	1.0	16.0/18.0	10.0/14.0	2.0/3.0	Ti5XCmin	-	-	-
317		0.08	2.0	0.045	0.030	1.0	18.0/20.0	11.0/15.0	3.0/4.0	-	-	-	X2CrNiMo 1810
317L		0.030	2.0	0.045	0.030	1.0	18.0/20.0	11.0/15.0	3.0/4.0	-	Tiy5 c Min	-	5CrNiMo 17 13
321		0.08	2.0	0.045	0.030	1.0	17.0/19.0	9.0/12.0	-	Ti5XCmin	04Cr18Ni10Ti20	En-58C	X2CrNiMo 1812
347		0.08	2.0	0.045	0.030	1.0	17.0/19.0	9.0/12.0	-	Nb/Ta10XCmin	04Cr18Ni10Nb-40	En-58G	X10CrNiTi89
409		0.030	1.00	0.040	0.030	1.00	10.50/11.753	0.50max	-	6X%Cmin.75 MAX	-	-	X10Cr NiNb 189
409M		0.028	0.8/1.5	0.040	0.030	1.00	10.8/12.5	1.5max	-	T10.25/0.75	-	-	X10Cr 13
410		0.15	1.0	0.040	0.030	1.0	11.5/13.5	0.60	-	-	12Cr13	En-58A	X7CrA 113
410S		0.08	1.0	0.040	0.030	1.0	11.5/13.5	0.60max	-	-	-	-	X10Cr 13
430		0.12	1.00	0.040	0.030	0.75	16.00/18.00	0.60	-	-	07Cr17	En-60	-
UNS S31803		0.03	2.0	0.030	0.020	1.00	21.0/23.0	4.5/6.5	2.5/3.5	N-0.08/0.20	-	-	-
UNS S32760		0.03	1.0	0.03	0.01	1.0	24.0/26.0	6.0/8.0	3.0/4.0	N-0.20/0.30	-	-	X90CrMo V18
UNS S32750		0.03	1.0	0.035	0.02	0.80	24.0/26.0	6.0/8.0	3.0/5.0	N-0.24/0.32	-	-	-
UNS S31254		0.02	1.0	-	-	0.8	20	18	6.1	-	-	-	-

CHEMICAL COMPOSITION OF NICKEL BASE ALLOYS

GRADE	C	Cu	Fe	Mn	Ni	S	Si	Al	Co	Cr	Mo	Nb	P	Ti	Co	Al-Ti	Cb+Ta
MONEL 400	.3 max	28-34 max	2.5 max	2.0 max	63.0 min	.024 max	.5 max	-	-	-	-	-	-	-	-	-	-
INCONEL 625	.10 max	-	5.0 max	.50 max	58.0 max	.015 max	.50 max	.40 max	1.0 max	20.0-23.0	8.0-10.0	3.15-4.15	.015 max	.40 max	1.0 max	-	-
INCONEL 600	0.15 max	0.50 max	6.00 to 10.00	1.00 max	72.0 min	0.015 max	0.50 max	-	-	14.0 to 17.0	-	-	-	-	-	-	-
INCONEL 800H	.10 max	-	39.5 max	-	30.0-35.0	-	-	0.15-0.60	-	19.0-23.0	-	-	-	0.15-0.60	-	0.30-1.20	-
INCONEL 825	.05 max	15-30	22.0 min	1.0 max	38.0-46.0	.03 max	.5 max	0.2 max	-	19.5-23.5	2.5-3.5	-	-	0.6-1.2	-	-	-
INCONEL 718	-	-	18.5 max	-	52.5 max	-	-	.5 max	1 max	-	3.05 max	-	-	.9 max	-	-	5.13
INCONEL X 750	.08 max	0.50 max	5.0-9.0	1.00 max	70.0 min	.01 max	.50 max	0.40-1.0	1.00 max	14.0-17.0	-	0.70-1.20	-	2.25-2.75	-	-	-
ALLOY 20	.06 max	3.0-4.0	31.0-44.0	2.0 max	32.5-35.0	-	1.0 max	-	-	19.0-21.0	3.0-4.0	1.0 max	-	-	-	-	1.0 max (Cb)
HASTELLOY C-276	.01 max	-	4.0-7.0	1.00 max	BAL	.03 max	.08 max	-	2.5 max	14.5-16.5	15.0-17.0	-	.04 max	-	-	-	-
HASTELLOY C-22	.015 max	-	2.0-6.0	.50 max	BAL	.02 max	.08 max	0.2 max	2.5 max	-	12.5-14.5	-	.02 max	0.6-1.2	-	-	-
NICKEL 201	.02 max	.25 max	40 max	.35 max	99.0 min	.01 max	.35 max	-	-	-	-	-	-	-	-	-	-
NICKEL 200	.015 max	.25 max	40 max	.35 max	99.0 min	.01 max	.35 max	-	-	-	-	-	-	-	-	-	-





WE CUSTOMIZE TO EVERY NEED



JAINEX STEEL & METAL

PRODUCT RANGE

Jainex Steel & Metal offers a very comprehensive product mix. Most of the products are tailor made to cater the need of various industrial / commercial segments. We offer products in the following range:

S. S. STRIP & NICKEL ALLOY

Grade	: AISI 200, 300 & 400 Series & High Nickel Alloy Material
Thickness	: 0.05mm to 4mm
Width	: 3.2mm & Above
Finish	: 2D Cold rolled stainless steel strips annealed & pickled 2B Cold rolled stainless steel strips annealed & skin passed 2R Work harden for specific hardness BA/BE/Matt Finish Cold rolled stainless steel strips
Hardness	: Annealed - Pickled (Soft), 1/4 Hard, 1/2 Hard, 3/4 Hard & Full Hard
Coil ID	: 150mm to 510mm depending on thickness & width of coil.
Length	: In Coil Form.



S. S. COILS & NICKEL ALLOY

Grade	: AISI 200, 300 & 400 Series & High Nickel Alloy Material
Thickness	: 0.1mm to 5mm
Width	: 250mm & Above
Finish	: 2D Cold rolled stainless steel strips annealed & pickled 2B Cold rolled stainless steel strips annealed & skin passed 2R Work harden for specific hardness BA/BE/Matt Finish Cold rolled stainless steel strips
Hardness	: Annealed - Pickled (Soft), 1/4 Hard, 1/2 Hard, 3/4 Hard & Full Hard
Coil ID	: 150mm to 510mm depending on thickness & width of coil.
Length	: In Coil Form.



S. S. SHIMS / FOILS & NICKEL ALLOY

Grade	: AISI 200, 300 & 400 Series & High Nickel Alloy Material
Thickness	: 0.02mm to 2mm
Width	: 300mm to 1000mm
Finish	: 2B / 2D / BA / Mat
Quility	: 201 / 202 / 301 / 304 / 316





WE CUSTOMIZE TO EVERY NEED



JAINEX STEEL & METAL

WINDING STRIPS

Jainex Steel and Metal offers a very comprehensive products mix, we supply to many of the gasket manufacture all over the world.

Grade	: 304, 304L, 316, 316L, 316TI, 309S, 310, 321, 347, Inconel , Titanium, Monel , Hastalloy, Pure Nickel, Duplex, Super Duplex
Thickness	: 0.20mm
Width	: 2.50mm, 3mm, 3.20mm, 3.50mm, 3.80mm, 4mm, 4.50mm, 4.80mm, 5mm, 5.20mm, 7.20mm or as per required
Finish	: BA /2R (Soft Annealed)



S. S. SHEETS / PLATES & NICKEL ALLOY

Grade	: 200 / 304 / 316 / 410 / 420 / 440 & High Nickel Alloy Material
Thickness	: 0.30mm to 20mm
Width	: 300mm & Above
Standard Size	: 1220 x 2440 / 1250 x 2500 & 1500 x 3000
Finish	: 2B / 2D / Mat PVC / BA
Hardness	: Annealed - Pickled (Soft), 1/4 Hard, 1/2 Hard, 3/4 Hard & Full Hard



S. S. FLATS & NICKEL ALLOY

Grade	: AISI 200, 300 & 400 Series & High Nickel Alloy Material
Thickness	: 1mm to 100mm
Width	: As per Required
Finish	: CR / HR Both
Quility	: 201 / 202 / 301 / 304 / 304L / 316 / 316L / 310 / 347





WE CUSTOMIZE TO EVERY NEED



JAINEX STEEL & METAL

AREAS OF APPLICATION

OPTICAL FIBER CABLE INDUSTRY

Stainless Steel Strips are used for armoring of Optical Fiber Cables primarily for:

- Protection against Corrosion
- Better longevity of optical cables also for efficient working of cables.

Grade	: 304
Thickness	: 0.125mm
Width	: As per Requirement
Length	: 2100 Mtrs. and above
Surface Finish	: 2D
Condition	: Annealed & Pickled



HYPODERMIC NEEDLES & CAPILLARY TUBES

- Stainless Steel is extensively used in this sector on account of following:
- Stainless Steel is Corrosion free Better Hygiene & Good Drawability

Hypodermic Needles

Grade	: 304L / 316L / 321
Thickness	: 0.20mm to 0.25mm
Width	: 9mm to 12.7mm (Slit Width)
Surface Finish	: 2D / 2B
Condition	: Annealed & Pickled

Capillary Tubes

Grade	: 304 / 304L // 316L / 321
Thickness	: 0.20mm to 0.30mm
Width	: As per requirement
Surface Finish	: 2D
Condition	: Annealed & Pickled



FILTER INDUSTRIES

- Stainless Steel is used for structured column packing in distillation column of
- Chemical, Fertilizer and Refinery Industries.

Structured Column Packing

Grade	: 304 / 304L / 316 / 317L / 321 / 310S / SMO254 / DUPLEX 2205 & 2507 / MONEL / INCONEL / HESTELLOY / NICKEL
Thickness	: 0.10mm
Width	: 240 / 280 / 305mm
Surface Finish	: Skin Pass (2B)
Condition	: Annealed & Pickled

Nutter Rings	: Used for Chemical Filtration
Grade	: 304 / 316L / 321 / 310S / SMO254 / DUPLEX 2205 & 2507 / MONEL / INCONEL / HESTELLOY / NICKEL
Thickness	: 0.30, 0.40, 0.45, 0.50mm
Width	: As per requirement
Surface Finish	: Skin Pass (2B)
Condition	: Annealed & Pickled





WE CUSTOMIZE TO EVERY NEED



JAINEX STEEL & METAL

AREAS OF APPLICATION

AUTOMOBILES

- Fuel Clamps, Fuel Cover etc.

Automobiles

Grade	: J-1, 304, 304L, 316, 316L, 202, JT
Thickness	: 0.20mm to 0.60
Width	: As per Requirement
Surface Finish	: 2D/2B/As Rolled
Condition	: Annealed & Pickled or 1/4 Hard or 1/2 Hard as per Requirement



FLEXIBLE HOSES, CLAMPS & BELLOWS

- Stainless Steel hoses are extensively used in
- All the Industries like Fertilizer, Chemical Oil & Gas etc.

Grade	: Austenitic Steel Grades of AISI J-(4%Ni), J-3 (2%Ni), J-4 (1%Ni), 304, 316 or as per other Equivalent standards of DIN / JIS
Thickness	: 0.20, 0.25, 0.30, 0.40, 0.50, 0.7mm 1mm, 1.2mm
Width	: As per requirement
Surface Finish	: Skin Pass (2B), BA, BE, 2R
Condition	: Annealed & Pickled, Half Hard & Hard



UTENSILS & THERMOWARE

- Stainless Steel is used for structured column packing in distillation column of
Chemical, Fertilizer and Refinery Industries.

Thermoware

Grade	: J-(4%Ni), J-3 (2%Ni), J-4 (1%Ni)
Thickness	: 0.24mm, 0.28mm, 0.35mm 0.40mm, 0.50mm
Width	: As per requirement
Surface Finish	: 2D
Condition	: Annealed & Pickled





WE CUSTOMIZE TO EVERY NEED



JAINEX STEEL & METAL

Application Area	Typical Application
Architecture	Doors, Arches, Window Frames, Column Facing, Roofing, Flashing, Copings, Fascia, Curtain Walls, Gravel Stops & Drains.
Chemical Processing	Pumps, Valves, Heat Exchangers, Vessels, Piping, Tanks, Filters, Instruments, Mixers, Reactors, Dryers, Columns, Meters, Sifters, Screens & Centrifuges.
Consumer Products	Consumer Durables, Home Furnishings, Hardwares, Washing Machine, Cooking Ranges, Dish Washer, Tableware Furniture, Accessories, Containers, Kitchen Applications & Utensils.
Environment	Sludge Handling Equipment, Flue Ducts, Scrubbers, Aerators, Water Treatment Plant, Valves & Piping.
Food Processing	Food Handlers, Tanks, Containers, Mixing Equipment, Dicers, Agglomerators, Conveyors, Panel Walls & Processors.
Pharmaceuticals	Vats, Vessels, Mixing Equipment, Piping, Valves, Pumps, Reactors Tablet & Packaging Machines.
Petroleum Refining & Petrochemicals	Heaters Tubes, Heat Exchangers, Tanks, Reactors & Pressure Vessels.
Pulp & Paper	Grinder, Water Sprays & Showers, Screening & Dewatering Equipment, Pulp Digestors, Cooking & Washing Towers, Bleaching Equipment & Paper Making Machines

OTHERS PRODUCTS

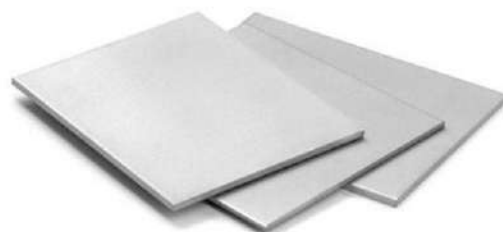
S.S. WIRES



S.S. RODS



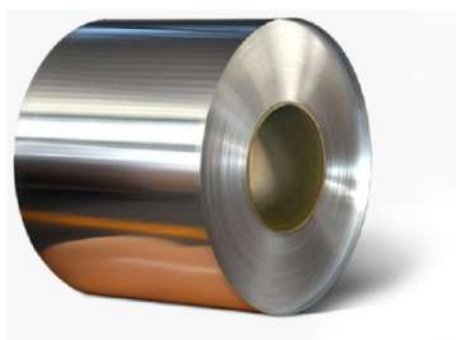
S.S. SHEET & PLATES



S.S. PIPES



ALUMINIUM



BRASS





WE CUSTOMIZE TO EVERY NEED



JAINEX STEEL & METAL

STAINLESS STEEL SHIM STOCK

Stainless Steel								
6" x 50" Rolls			6" x 100" Rolls		12" x 50" Rolls		6" x 100" Rolls	
Thickness	Part No.	Wt./Lbs	Part No.	Wt./Lbs	Part No.	Wt./Lbs	Part No.	Wt./Lbs
0.0005/.0127mm	SS-X	.04	SSH-X	.09	SSW-X	.09	SSHW-X	.18
0.001/.025mm	SS-1	.09	SSH-1	.18	SSW-1	.18	SSHW-1	.36
0.0015/.038mm	SS-1X	.14	SSH-1X	.28	SSW-1X	.28	SSHW-1X	.56
0.002/.051mm	SS-2	.18	SSH-2	.36	SSW-2	.36	SSHW-2	.72
0.003/.076mm	SS-3	.26	SSH-3	.52	SSW-3	.52	SSHW-3	1.04
0.004/.102mm	SS-4	.35	SSH-4	.70	SSW-4	.70	SSHW-4	1.40
0.005/.127mm	SS-5	.44	SSH-5	.88	SSW-5	.88	SSHW-5	1.76
0.006/.152mm	SS-6	.53	SSH-6	1.06	SSW-6	1.06	SSHW-6	2.12
0.007/.178mm	SS-7	.62	SSH-7	1.24	SSW-7	1.24	SSHW-7	2.48
0.008/.203mm	SS-8	.70	SSH-8	1.40	SSW-8	1.40	SSHW-8	2.80
0.009/.229mm	SS-9	.79	SSH-9	1.58	N/A	-	N/A	-
0.010/.254mm	SS-10	.88	SSH-10	1.76	SSW-10	1.76	SSHW-10	3.52
0.012/.305mm	SS-12	1.05	SSH-12	2.10	SSW-12	2.10	SSHW-12	4.20
0.015/.381mm	SS-15	1.32	SSH-15	2.64	SSW-15	2.64	SSHW-15	5.28
0.020/.508mm	SS-20	1.76	SSH-20	3.52	SSW-20	3.52	SSHW-20	7.04
0.025/.635mm	SS-25	2.19	SSH-25	4.38	SSW-25	4.38	SSHW-25	8.76
0.031/.787mm	SS-31	2.72	SSH-31	5.44	SSW-31	5.44	SSHW-31	10.88

ASSORTMENTS

S.S/EC

Weight : .97 lbs

6" x 50" assortment contains one piece of each of the following sizes:

.001, .002, .003, .005

SSA-8

Weight : 1.45 lbs

6" x 50" assortment contains one piece of each of the following sizes:

.001, .002, .003, .005, .008, .010, .015, .020

SSA-12

Weight : 2.06 lbs

6" x 50" assortment contains one piece of each of the following sizes:

.001, .0015, .002, .003, .004, .005, .006, .007, .008, .010, .012, .015

SSA-15

Weight : 3.23 lbs

6" x 50" assortment contains one piece of each of the following sizes:

.001, .0015, .002, .003, .004, .005, .006, .007, .008, .010, .012, .015, .020, .025, .031



MATERIAL GUIDE

- Type 301 / 304 / 316L
- Approximate Rockwell hardness of C 40-45
- Tensile strength 185,000 PSI minimum.
- Yield Strength 140,000 PSI minimum.
- Complies with ASTM A-666 and AMS-5906, QQ-S-766.

Flat Pieces

		6" x 25" (2 pcs/pk)		6" x 25" (10 pcs/pk)	
Thickness	Part No.	Wt./Lbs	Part No.	Wt./Lbs	Part No.
.010/.254mm	SSF-10	.88	SSFP-10	4.40	
.012/.305mm	SSF-12	1.05	SSFP-12	5.25	
.015/.381mm	SSF-15	1.32	SSFP-15	6.60	
.020/.508mm	SSF-20	1.76	SSFP-20	8.80	
.025/.635mm	SSF-25	2.19	SSFP-25	10.95	
.031/.787mm	SSF-31	2.72	SSFP-31	13.60	



WE CUSTOMIZE TO EVERY NEED



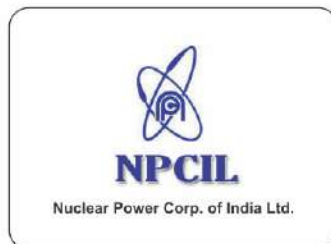
JAINEX STEEL & METAL

Stainless Steel Shim Stock		
24" x 50" Rolls		
Thickness	Part No.	Wt./Lbs
.001/.025mm	SSNW-1	.35
.002/051mm	SSNW-2	.70
.003/076mm	SSNW-3	1.04
.004/.102mm	SSNW-4	1.39
.005/.127mm	SSNW-5	1.74
.006/.152mm	SSNW-6	2.09
.007/178mm	SSNW-7	2.44
.008/.203mm	SSNW-8	2.78
.010/.254mm	SSNW-10	3.48
.012/.305mm	SSNW-12	4.18
.015/.381mm	SSNW-15	5.22
.020/508mm	SSNW-20	6.96
.025/.635mm	SSNW-25	8.70
.31/.787mm	SSNW-31	10.79



THIRD PARTY INSPECTION

Jainex Steel And Metal can offer you material with inspection of any third party. Third party inspection offers quality and thorough inspection for buyers. The inspection agency can be nominated by client or we can arrange the third party inspection by various world class reputed agency like below....





WE CUSTOMIZE TO EVERY NEED



JAINEX STEEL & METAL

QUALITY POLICY

A rigorous system of quality management is in place to ensure that each manufactured products conforms to international standards of excellence.

Quality assurance is the threshold of all the activities and Stringent quality control measures are applied in its In-House facilities for Forging, Machining and Heat Treatment processes. We take pride in offering quality products, manufactured in conformance with International standards.

We strongly believe that adherence to high standard of quality is a pre-requisite for maintaining leadership position in the business. Keeping the quality aspects utmost in our mind, we follow a system of quality control as per International Standard.

ISO Certification





JAINEX STEEL & METAL

Impoters & Stockists of : Stainless Steel Shims, Strips, Coils, Sheets & Foils in Thikness from 0.02mm to 4mm in all Hardness in AISI 202, 301, 304 & 316 Grades.

Also Specialists in Nickel & Percentage items.

Shop No 1, 1st Khetwadi Lane, Saboo Siddik Building, Near Alankar Cinema, Mumbai - 400004.

Tel.: +91- 66109398 / 66394240 **Email :** sales@jainexsteel.com / Jainexsteel@gmail.com / Info@jainexsteel.com

www.jainexsteel.com



JAINEX STEEL IMPEX

Impoters & Stockists of : Stainless Steel Shims, Strips, Coils, Sheets & Foils in Thikness from 0.02mm to 4mm in all Hardness in AISI 202, 301, 304 & 316 Grades.

Also Specialists in Nickel & Percentage items.

Shop No 1, 1st Khetwadi Lane, Saboo Siddik Building, Near Alankar Cinema, Mumbai - 400004.

Tel.: +91- 66109398 / 66394240 **Email :** export@jainexsteelimpex.com / Info@jainexsteel.com

www.jainexsteelimpex.com

WAREHOUSE

Plot No 1398, Sheet Market, Khidukpada Village, Kalamboli, City Panvel, Maharashtra, India

Also visit as on

